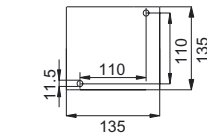
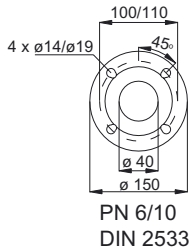
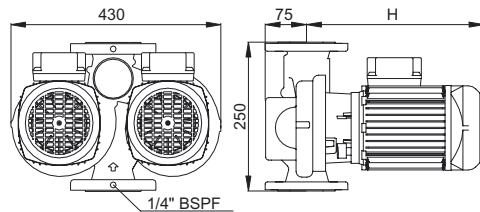
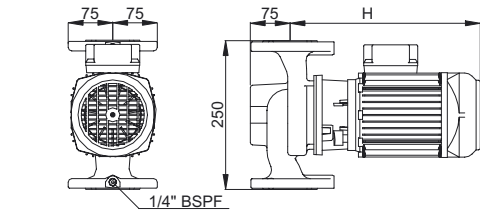


# Omega™

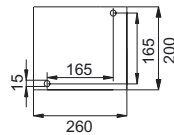
Glanded pumps.  
Tørløber pumper.  
Trockenläufer Pumpen.

## In-line DN 40

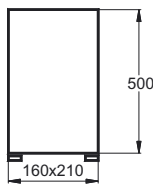
Omega 4-100-2 (D) (Z)  
Omega 4-100-4 (D) (Z)



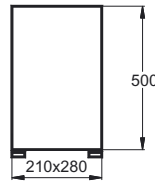
Foot: Single model



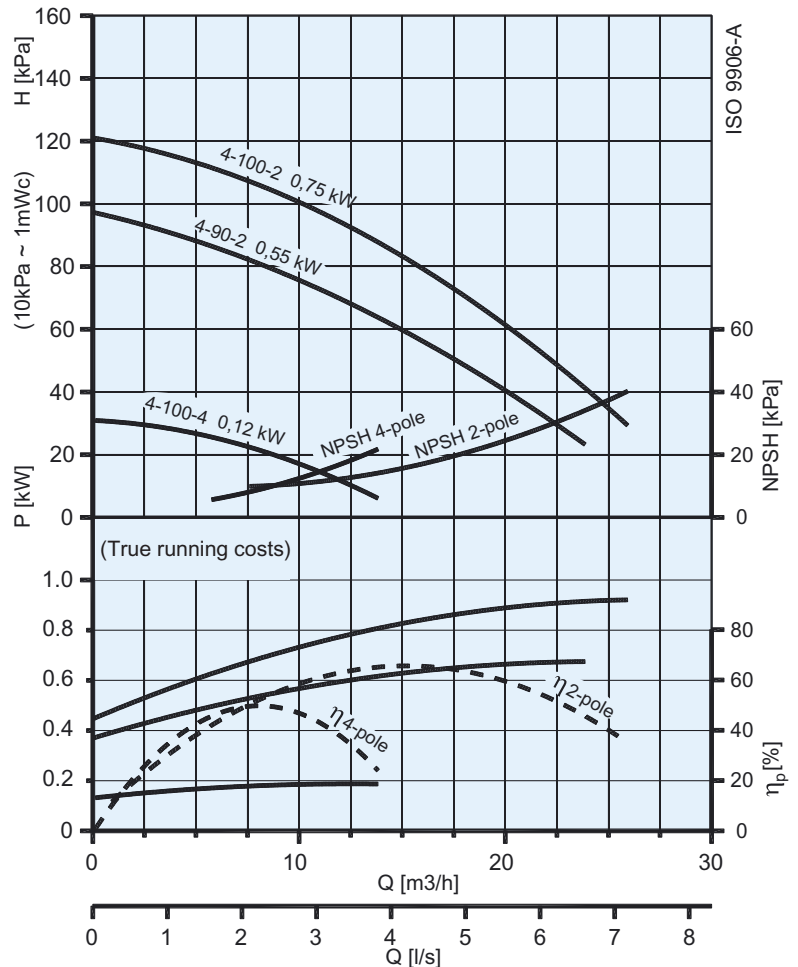
Foot: Twin model



Pedestal 44 kg.  
(incl. concrete)



Pedestal 76 kg.  
(incl. concrete)



P<sub>i</sub>:  
True running costs  
Optagen effekt  
Leistungsaufname

$$P_3 = Q \times H = \eta_p \times P_2$$

$$P_2 = \eta_m \times P_1$$

Power(kW)	0,12	0,55	0,75
H	Single 295	295	305
	Twin 273	273	283

Type.	Kg		Motor P <sub>2</sub> (kW)	I <sub>n</sub> (A) (50Hz) — standard			Cos φ	n(min <sup>-1</sup> )	dB(A)	η <sub>m</sub> (%) — standard.		
	Single	Twin		1x230V	3x400/230V	3x690/400V				eff 1	eff 2	eff 3
Omega 4-100-4 (D)(Z)	13,9	26,6	0,12	-	0,48/0,83	-	0,67	1405	36	63	54	-
Omega 4-100-4 (D)(Z)	14,3	27,4	0,12	1,2	-	-	0,87	1420	36	54	49	-
Omega 4-90-2 (D)(Z)	15,3	29,4	0,55	-	1,6/2,8	-	0,70	2840	46	72	-	-
Omega 4-90-2 (D)(Z)	16,0	30,8	0,55	4,2	-	-	0,92	2710	46	72	65	-
Omega 4-100-2 (D)(Z)	15,9	34,1	0,75	-	2,0/3,46	-	0,83	2710	46	79	65	-
Omega 4-100-2 (D)(Z)	17,4	35,6	0,75	4,75	-	-	0,94	2810	52	74	-	-

D = Twin pump Z = Bronze pump Bronze = +3 kg

IEC 38 +/- 10%, 50 Hz, IP 55

This model is also available as an Omega-Drive - a selfregulating pump with integral inverter and optional differential pressure transducer. Denne model fås også som Omega-Drive - en selvregulerende pumpe med integreret frekvensomformer med eller uden monteret differenstryk-transmitter. Dieses Model ist auch als Omega-Drive lieferbar - eine selbstregulierende Pumpe mit integriertem Umrichter, mit montiertem oder ohne Differenzdruckschalter.

Smedegaard reserve the right to change the product without prior notice and take no responsibility for inaccuracies or misprints.