

# Insulation Covers for EV and SimFlex Circulators



- Complete coverage of the pump casing including flanges
- Good insulating properties using CFC free polyurethane foam ( $\lambda = 0,027 \text{ W/mk}$ )
- Smooth, washable surface
- Easy fitting/retrofitting without any use of tools
- Non inflammable polystyrene in accordance to DIN 4102.B1
- Suitable for temperature up to  $120^{\circ}\text{C}$ .

## Insulation Covers for EV and SimFlex Circulators

A range of EV and SimFlex circulators can be fitted with insulating covers (see table).

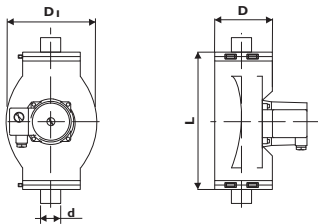
The insulating cover is designed to fit the entire pump casing including their connections. Connecting flanges and unions are also insulated at the same time.

The insulating cover consists of two parts and are held together by means of tension straps. No tools are required for installation. The dimensions for the insulating covers are shown in the table below.

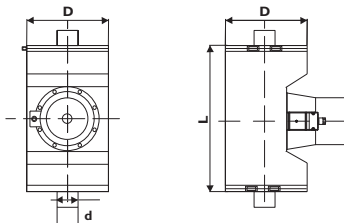
### Specification

Surface	Polystyrene (Non inflammable DIN 4102.B1)
Colour	Grey RAL 7035
Foam	Polyurethane PUR (CFC free), density= 60 kg/m <sup>3</sup>
Insulating capacity	$\lambda$ Ca. 0,027 w/mk v/40 °C
Max. Temp.	120 °C continued

### Dimensions for 25 and 32 mm pipe



### Dimensions for N 40 – N 80 mm pipe



### Dimensions

Pipe size.	d	L	D	DI
25	1"	310	130	200
32	1 1/4"	310	130	200
DN 40	1 1/2"	350	210	-
DN 50	2"	450	225	-
DN 65	2 1/2"	490	270	-
DN 80	3"	512	290	-

Model	Voltage	Insulation covers product No.
SimFlex 30-120	1~230V	936.7245.033
SimFlex 40-100	1~230V	936.7245.041
SimFlex 40-140	1~230V	936.7245.041
SimFlex 50-90	1~230V	936.7245.050
SimFlex 50-140	1~230V	936.7245.050
SimFlex 65-90	1~230V	936.7245.065
SimFlex 65-120	1~230V	936.7245.066
SimFlex 80-120	1~230V	936.7245.080

Model	Voltage	Insulation covers product No.
EV 2-50/65/70-2	1~230V	936.7245.025
SimFlex 2-50/65/70	1~230V	936.7245.025
EV 2-72-2	3~230/400C	936.7245.026
EV 2-72-2	1~230V	936.7245.026
SimFlex 2-72-2	1~230V	936.7245.026
EV 3-50/65/70-2	1~230V	936.7245.025
SimFlex 3-50/65/70	1~230V	936.7245.025
EV 3-72-2	3~230/400V	936.7245.032
EV 3-72-2	1~230V	936.7245.032
SimFlex 3-72	1~230V	936.7245.032
EV 3-100-2	3~230/400V	936.7245.033
EV 3-100-2	1~230V	936.7245.033
SimFlex 3-100	1~230V	936.7245.033
EV 4-60-2	3~230/400V	936.7245.040
EV 4-60-2	1~230V	936.7245.040
SimFlex 4-60	1~230V	936.7245.040
EV 4-75-2	3~230/400V	936.7245.041
EV 4-75-2	1~230V	936.7245.041
SimFlex 4-75	1~230V	936.7245.041
EV 4-100-4	3~230/400V	936.7245.041
EV 4-100-4	1~230V	936.7245.041
EV 4-95-2	3~230/400V	936.7245.042
EV 4-125-4	3~230/400V	936.7245.042
EV 4-125-4	1~230V	936.7245.042
EV 5-88-2	3~230/400V	936.7245.050
SimFlex 5-88	1~230V	936.7245.050
EV 5-95-2	3~230/400V	936.7245.051
EV 5-125-4	3~230/400V	936.7245.052
EV 6-95-2	3~230/400V	936.7245.065
SimFlex 6-95	1~230V	936.7245.065
EV 6-110-2	3~230/400V	936.7245.066
EV 6-125-4	3~230/400V	936.7245.067
EV 8-95-2	3~230/400V	936.7245.080
EV 8-100-2	3~230/400V	936.7245.080
EV 8-120-2	3~230/400V	936.7245.080
EV 8-125-4	3~230/400V	936.7245.080

It is Smedegaard's policy to continually improve and develop its product range. We reserve the right to change specifications without prior notice. Whilst every care has been taken to ensure the data is correct, no responsibility can be taken for inaccuracies or misprints.